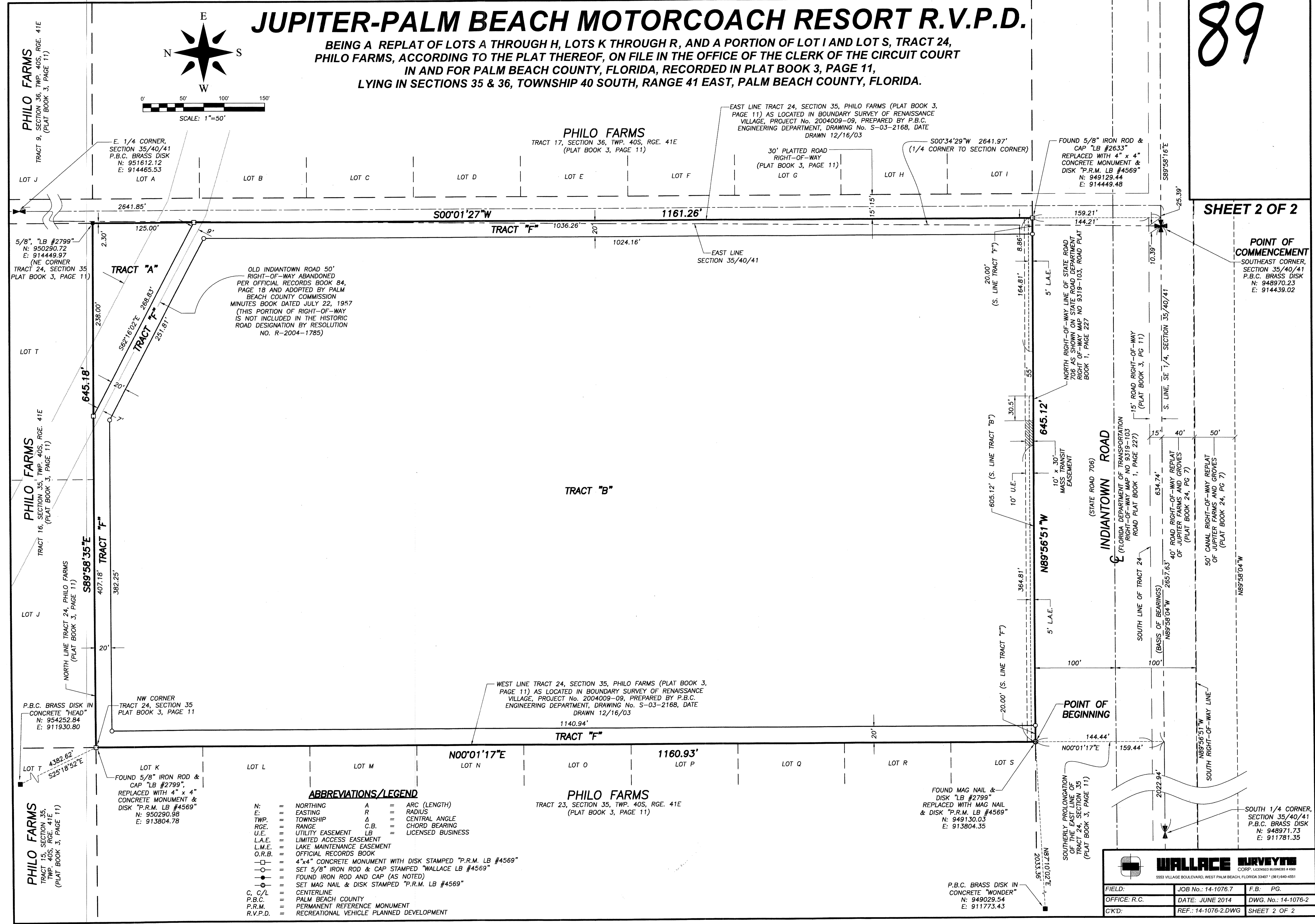
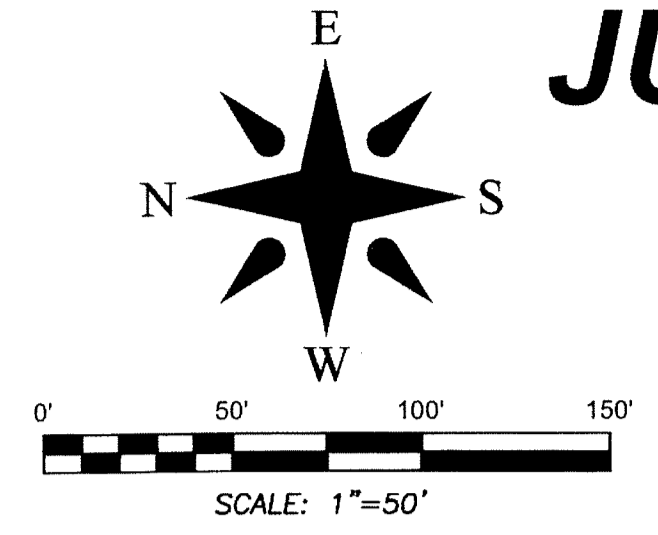


JUPITER-PALM BEACH MOTORCOACH RESORT R.V.P.D.

BEING A REPLAT OF LOTS A THROUGH H, LOTS K THROUGH R, AND A PORTION OF LOT I AND LOT S, TRACT 24, PHILO FARMS, ACCORDING TO THE PLAT THEREOF, ON FILE IN THE OFFICE OF THE CLERK OF THE CIRCUIT COURT IN AND FOR PALM BEACH COUNTY, FLORIDA, RECORDED IN PLAT BOOK 3, PAGE 11, LYING IN SECTIONS 35 & 36, TOWNSHIP 40 SOUTH, RANGE 41 EAST, PALM BEACH COUNTY, FLORIDA.



SHEET 2 OF 2

POINT OF COMMENCEMENT
SOUTHEAST CORNER, SECTION 35/40/41
P.B.C. BRASS DISK
N: 948970.23
E: 914439.02

OLD INDIANTOWN ROAD 50' RIGHT-OF-WAY ABANDONED PER OFFICIAL RECORDS BOOK 84, PAGE 18 AND ADOPTED BY PALM BEACH COUNTY COMMISSION MINUTES BOOK DATED JULY 22, 1957 (THIS PORTION OF RIGHT-OF-WAY IS NOT INCLUDED IN THE HISTORIC ROAD DESIGNATION BY RESOLUTION NO. R-2004-1785)

TRACT "B"

TRACT "F"

ABBREVIATIONS/LEGEND

- N: = NORTHING
- E: = EASTING
- TWP. = TOWNSHIP
- RGE. = RANGE
- U.E. = UTILITY EASEMENT
- L.A.E. = LIMITED ACCESS EASEMENT
- L.M.E. = LAKE MAINTENANCE EASEMENT
- O.R.B. = OFFICIAL RECORDS BOOK
- 4"x4" CONCRETE MONUMENT WITH DISK STAMPED "P.R.M. LB #4569"
- SET 5/8" IRON ROD & CAP STAMPED "WALLACE LB #4569"
- FOUND IRON ROD AND CAP (AS NOTED)
- SET MAG NAIL & DISK STAMPED "P.R.M. LB #4569"
- C, C/L = CENTERLINE
- P.B.C. = PALM BEACH COUNTY
- P.R.M. = PERMANENT REFERENCE MONUMENT
- R.V.P.D. = RECREATIONAL VEHICLE PLANNED DEVELOPMENT
- A = ARC (LENGTH)
- R = RADIUS
- Δ = CENTRAL ANGLE
- C.B. = CHORD BEARING
- LB = LICENSED BUSINESS

PHILO FARMS
TRACT 23, SECTION 35, TWP. 40S, RGE. 41E
(PLAT BOOK 3, PAGE 11)

FOUND MAG NAIL & DISK "LB #2799" REPLACED WITH MAG NAIL & DISK "P.R.M. LB #4569"
N: 949130.03
E: 913804.35

SOUTH 1/4 CORNER, SECTION 35/40/41
P.B.C. BRASS DISK
N: 948971.73
E: 911781.35

WALLACE SURVEYS
CORP. LICENSED BUSINESS # 4569
5555 VILLAGE BOULEVARD, WEST PALM BEACH, FLORIDA 33407 (561) 640-4551

FIELD:	JOB No.: 14-1076.7	F.B.: PG.
OFFICE: R.C.	DATE: JUNE 2014	DWG. No.: 14-1076-2
CK'D:	REF.: 14-1076-2.DWG	SHEET 2 OF 2